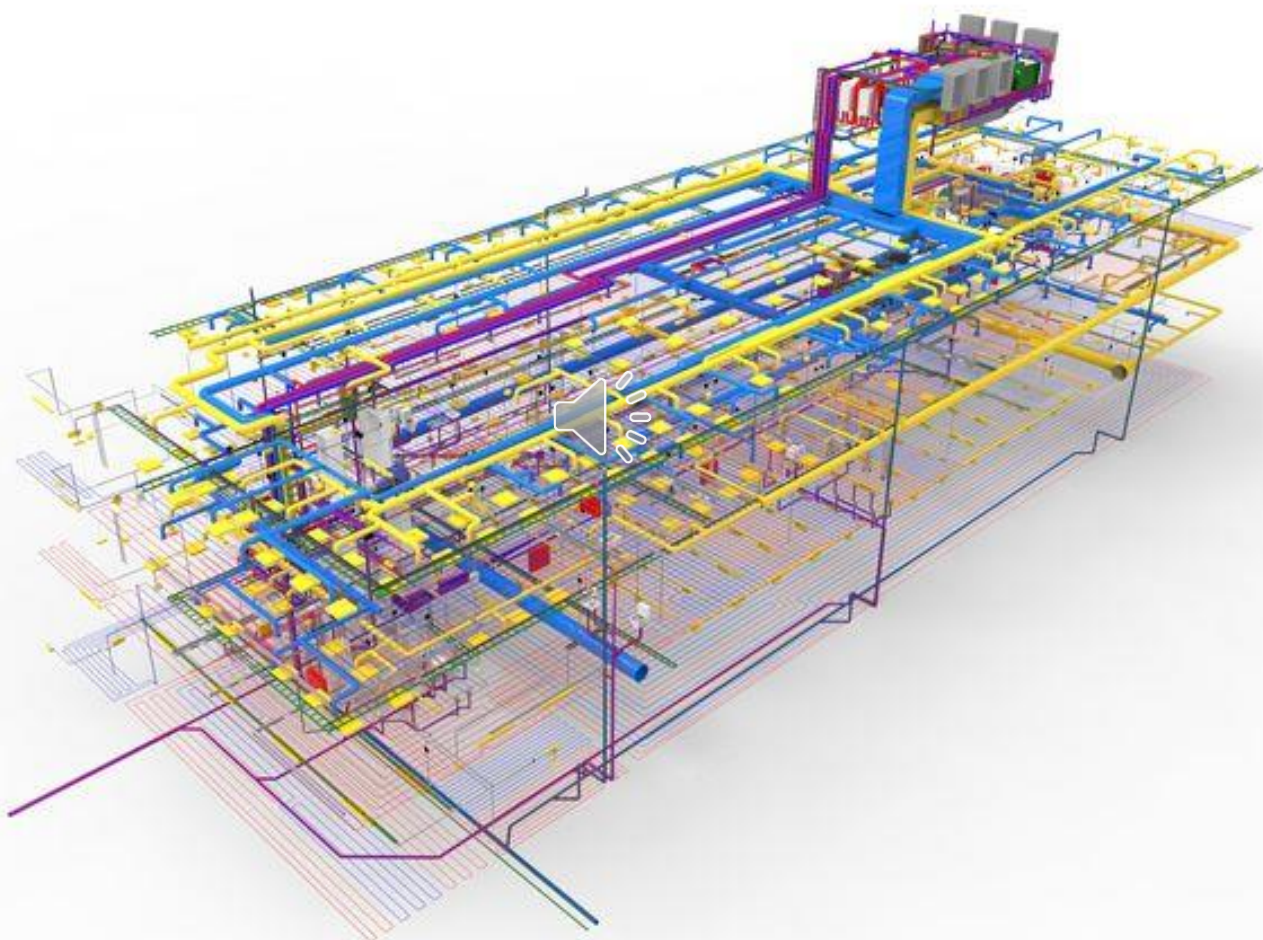




SEPTEM BUILDING SERVICES

(MEP Design Services)



Member Of:

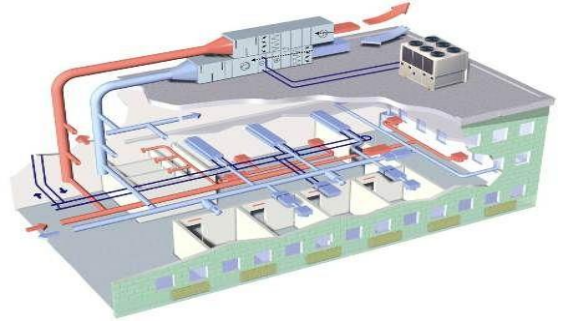


Services offered:

We offer all services related to construction under one roof for best co-ordination and minimize the problems during Project Execution.

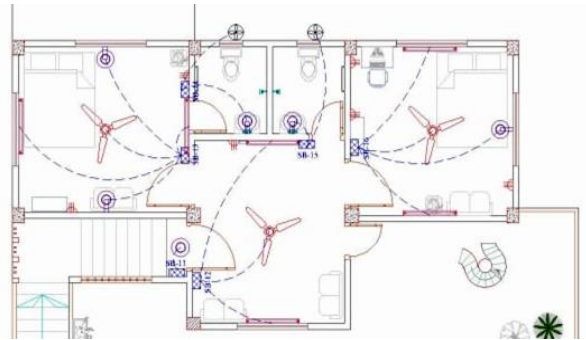
❑ Mechanical (HVAC)

- Basement Ventilation System
- Mechanical Ventilation
- Natural Ventilation
- Air Conditioning & Heating



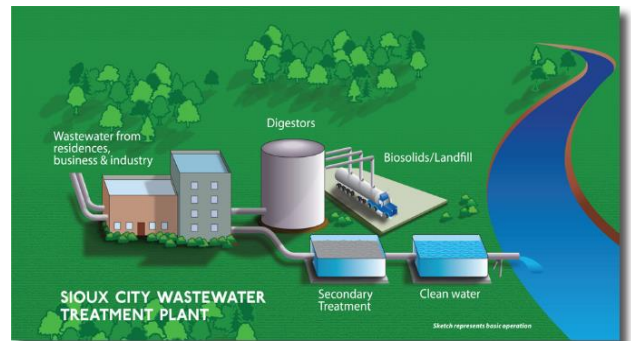
❑ Electrical (HT/LT/ELV)

- Substations & Power Distribution system
- Lighting & Power systems
- Fire Alarm & Public Address system
- Telephone, Data & TV System
- Building Management System



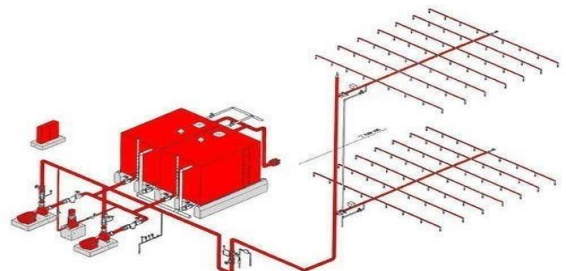
❑ Public Health Engineering

- Water Demand calculation as per standards
- Pump Room design
- Water Distribution System
- Drainage System
- Sewage Treatment Plant Design
- Storm Water Drainage System
- Rain water System Design.



❑ Fire Fighting

- Fire System Design as per Standards
- Automatic Sprinkler system
- Dry & Wet riser system
- Early detection & suppression system
- Portable fire distribution system



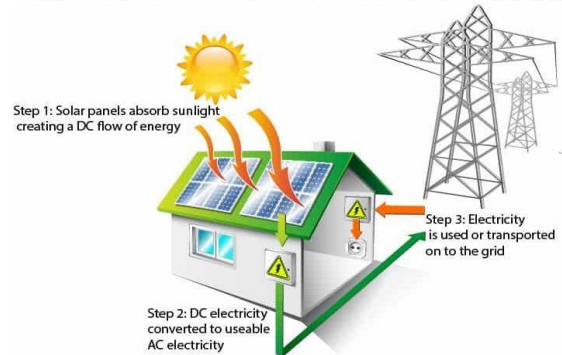
❑ BIM/Revit Modeling

- Perfect co-ordination with all services.
- Hassel free design implementation
- It eliminates clashes between services
- It reduces time, rework and cost over runs on site.



❑ Solar Design Service

- Calculating the Area for solar installation.
- Calculating Electrical Load of Building to give proper capacity of Solar Plant
- Calculating Hot water requirement to design Hot water Solar Plant design.



❑ Green Building Design Service

The common objective of Green Building Design is to reduce the overall impact of the built environment on human health and the natural environment by:

- Efficiently using energy, water, and other resources.
- Reducing waste, pollution and environmental degradation.



❑ Parking and Lift system

- Machine room Less (MRL) Elevators
- Panoramic Elevators
- Car Elevators
- Stack parking
- Puzzle parking



“Go Green Grow Future”

Residential Project

Project Details: Tagore Nagar Housing Project

Location : Vikhroli, Mumbai

Structure : G+22 Storey Building



Commercial Project

Project Details : SURAT INTERNATIONAL EXIBITION
AND CONVENTION CENTRE (SIECC)

Location : Surat, Gujrat

Structure : G+2 Storey Multifunction Hall & Auditorium
: G+4 Storey Parking Building



Project Details : NDT Technology

Location : Navi Mumbai, Maharashtra

Structure : G+5 Storey Commercial Building



AIRPORT PROJECT

Project Details : SURAT AIRPORT

Location : Surat, Gujrat



Project Details : SINDHUDURG AIRPORT

Location : Sindhudurg, Maharashtra



Projects:

❑ Consulting:



- CPWD Office Project, Mumbai
(Up to 1 lakh sq.ft.)



- MIDC TTC Project, Mumbai
(Up to 3 lakh sq.ft.)



- Garware Institute, Mumbai
(Up to 1 lakh sq.ft.)



- Tagore Nagar Housing Project, Mumbai
(Up to 4 lakh sq.ft.)



- Allahabad Airport, Allahabad
(Up to 2 lakh sq.ft.)



- Sindhudurg Airport, Sindhudurg
(Up to 2 lakh sq.ft.)



- Surat Airport, Gujarat
(Up to 2 lakh sq.ft.)



- Geeta CHS, Mumbai
(Up to 1 lakh sq.ft.)



- Surat International Exhibition and Convention Center (Up to 3 lakh Sq.ft.)



- Villa at Sindhudurg



- Oskar Oneinfra, Mumbai (Up to 2 lakh sq.ft.)



- Warli Haat, Palghar (Up to 5 lakh Sq.ft.)



- NDT Technology Park, Navi Mumbai



- Mr. Anish Bungalow, Pune



- Neha CHS, Mumbai (Up to 1 lakh Sq.ft.)



- Netarwala Housing Project, Mumbai (Up to 1 lakh sq.ft.)

- And some more projects.....

About us:

Septem Building Services, is a team of professionals endeavouring to cater to the growing need for qualified MEP (Mechanical, Electrical, Plumbing & Fire Fighting) Green Building Design, BIM / Revit 3D Modelling & Structural Engineering Services with having rich experience in the fields of engineering and implementation of various projects.

We are committed to deliver our services up to completion of the project irrespective of project stage.

We provide a complete package to our clients involving timely service with convenience, co-operation & expertise backed with a perfect financial model.

The knowledge that each client requirements are unique has helped us to successfully design & deliver customised solutions to meet their requirements.

We are a Multidisciplinary Engineering Design Consultant Firm based in Mumbai, whilst our projects have been global.

Approved/Registered Under:

- Reg. Member of ISHRAE (**Reg. No. 31179**)
- Reg. Member of Indian Plumbing Association (IPA) (**Reg. No. L-2278**)
- Reg. Member of Indian Green Building Council (IGBC) (**IGBCCS210131**)
- Chartered Engineer (IEI) (**AM1679360**)
- Reg. Structural Engineer / Structural Auditor / Building Health Assessment (Municipal Corporation of Greater Mumbai, MCGM, Mumbai)
- Reg. Structural Engineer / Structural Auditor / Building Health Assessment (Pimpri-Chinchwad Municipal Corporation, PCMC, Pune)
- Immovable Property Valuer (PVAI & amp, IVSC) (**AM-325**)

❑ Contracting :

- ❑ As a value added service to our clients who require MEP Contractors, we provide references to our client as we are Associates with some Reputed Contractors and some of our client list are as below:

Commercial

- Taj hotels and Palace
- Oriental Hotels
- Vivanta Group of Hotels
- Reliance Telecom Ltd.
- Sparkon Engineers
- Valasang Spinning Mill
- Reliance Industries
- GVK (International Airport)
- L&T Ltd.
- Wockhardt Hospital
- Bharti Hospital
- JSW
- Phonix Marketcity
- Mother Dairy
- Chitale Dairy
- DNS Fine Chemicals
- Teva Pharmaceuticals
- Vital Healthcare

Residential

- Sunil Mantri Realty
- Waterfront
- Wonderland
- TATA Housing Projects
- Neptune Group
- Sainath Builders
- National Builders
- Godrej Properties
- Astha Siddhi Construction
- Dalvi Premises Pvt. Ltd.
- Shreeji Developers
- Vastav Developers
- Sugee Developers
- Sanaya Realities
- Nirmal Jain Group
- Shambhu Infra
- Palan Realty
- Om Sai Developers

Our Prestigious Clients:



Contact us:

- **Mumbai :** 901, Madhuri CHS, Plot no. 01, Sector 6, Airoli,
Navi Mumbai: 400708 Mob. 07776991757
- **Delhi :** Rz-3102, Gali No. 35, Opp. Jamia Hamdard University,
Gate No.6, Tughlakabad Extension, New Delhi - 110019
- **Solapur:** UGF 73, The Square Mall, Juni Mill Compound,
Solapur : 413003 Mob. 09665468337
- **Web :** www.septem.co.in
- **E-mail :** septembuildingservices@gmail.com